



Model: C06-AC

C-SERIES, 6inch RECESSED DOWNLIGHT FIXTURE – AC_{input}
LED Downlight
Fully Integrated Recessed LED Light Fixture

SPECIFICATIONS & FEATURES

WHERE TO USE – Interior or exterior under covered surface, new construction and/or retro-fit installations where surface mount or recessed lighting is required. Install in RM, NC, IC, ICAT & Fire Rated applications.

TYPICAL APPLICATIONS – Commercial, hospitality, residential, and industrial locations where general illumination is required. Use in breezeways, corridors, offices, hotels, conference rooms, kitchens, multi-family, garages & more.

DESIGN & CONSTRUCTION – Patented low profile planer design utilizing Light Forward Heat Forward thermal management. 100% aluminum with 40% recycled content. Fixture is >90% recyclable. Durable powder coated finish.

MOUNTING/INSTALLATION – *New Construction/Retrofit*: easily mounts into any 6-8inch hole opening using adapter plate (kit P/N: IR01).

ELECTRICAL – Approved for feed through wiring.

DIMMING – Provides both 120VAC Triac/Phase dimming (0.5% - 100% continuous dimming) & Silescent 4-wire digital SimpleNet control. See Silescent Dimming Capabilities and Compatibility chart at www.silescent.com.

LIGHT DISTRIBUTION – Wide Area Distribution.

ADVANCED INTELLIGENT LIGHT ENGINE – Active thermal feedback monitors both LED & driver to protect against risk of overheating and assuring expected life.

SERIAL NUMBER CONTROL – Addresses legacy lighting concerns. Each light Engine is serial number controlled should a fixture need to be repaired or replaced.

LISTINGS & COMPLIANCE – UL1598 recessed mount listed Canada & US (ETL label), wet location under cover ceiling. IP65 & RoHS compliant. IC-rated for direct contact with insulation. Certified airtight per ASTM E283-04.

EXTRA LONG LIFE – 100,000 operating hours (@ 10 hrs/day is > 27 years)

WARRANTY – 5 year limited warranty, both LED and driver. Full warranty details available at www.silescent.com

MADE IN USA – Both driver and fixture are designed, engineered and manufactured by Silescent Lighting in Ft. Lauderdale FL (ARRA & NAFTA compliant).

OPTIONS

FINISH – Powder Coat Finish Standard. Custom colors available (RAL).

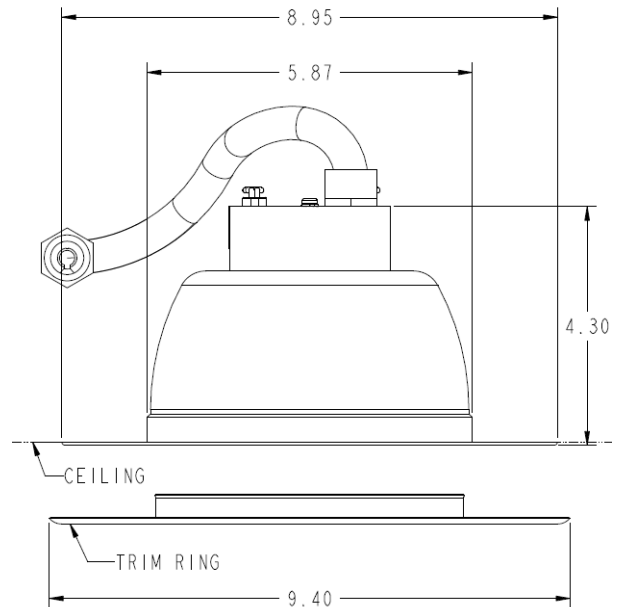
LAMP TEMPERATURES (CCT) – 2700, 3000, 3500, 4000 & 5000 Kelvin (CRI>80). 70 & 90 CRI available upon request.

WATTAGE LEVELS – Available in 8, 10, 15 & 20watts. Custom wattages or lumen levels available upon request.

ELECTRICAL DATA

- **Operating Temp:** -40C to +40C
- **Ambient Temp:** <35C
- **Operating Voltage:**
 - LP3 103 – 125VAC, 50 / 60 Hz (*continuous dimming*)
 - HN3/HS3 103 – 285VAC, 50 / 60 Hz
- **Nominal Voltage:** 120/240/277V (specify)
- **Rated Wattage:** ≤20 watts (*see specified fixture photometrics*)

Item Code	Type
Project	
Comments	Date
Prepared by	



ORDERING INFORMATION

Sample Number: C06AC01LP335RP120w

Series	Style/Size	Finish/Color	Driver	Color	Optics	Wattage Levels
C06	A	C01	LP3	35	RP1	20w
C06 - Recessed Fixt.	A - Standard Trim	C01 - PC-White	LP3 - 120VAC _{in} , Triac HN3 - 120/277V, On/OFF HS3 - 120/277VAC _{in} , SN	27 - 2700K (80CRI) 30 - 3000K (80CRI) 35 - 3500K (80CRI) 40 - 4000K (80CRI) 50 - 5000K (80CRI)	RP1 - Std Glass RP2 - Solid Diffuser	08w - 8 watts 10w - 10 watts 15w - 15 watts 20w - 20 watts

