



## 6 INCH RECESSED CAN LIGHT CONVERSION KIT

20watt, 8" Surface Mount Low Profile LED Downlight  
ENERGY STAR® Certified, 120/277VAC<sub>in</sub>, 119 lm/W  
Series: K0620w

### FEATURES & BENEFITS

This 6 inch Recessed Can Light Conversion Kit is a simple way of upgrading old inefficient recessed can lights to highly efficient, maintenance free LED Lighting. Ideal solution for outdoor under cover or high ceiling down lighting of commercial, hospitality/hotels, retail spaces and many more.

**EASY MOUNTING/INSTALLATION** – This LED Recessed Can Light Conversion Kit mounts directly into any 4" or larger recessed fixture with Silescent can light conversion bracket. *Install in RM, IC, ICAT & Fire Rated applications.*

**ENERGY EFFICIENT** – This high lumen, low wattage product offers exceptional energy efficient value.

**MAINTENANCE FREE** – Eliminates costly bulb and/or ballast replacements, lens cleaning/replacements due to UV yellowing and is corrosion resistant. Reduces unnecessary landfill & disposal.

**ARCHITECTURALLY PLEASING DESIGN** – The design patented fixture (No.: D604,008) looks outstanding in either the ON or OFF state.

**PLEASING LAMP COLOR** – High CRI value (>80) delivering pure (visible) light spectrum lighting originating from the highest quality COB array's producing the most vibrant of colors.

**WIDE AREA LIGHT DISTRIBUTION** – Wide area distribution provides remarkable light coverage.

**INSTANT ON/OFF** – Designed for instant ON/OFF use.

**SANITARY DESIGN** – This fixture has been designed to eliminate or minimize dust and germ collecting surfaces and allows for easy cleaning (IP65).

**ENVIRONMENTALLY FRIENDLY** – No Hazardous Mercury Content.

**LISTINGS & COMPLIANCE** – ENERGY STAR certified LED Downlight, UL1598 listed Canada & US (ETL label), wet location under cover ceiling, IP65 rated, RoHS compliant.

**THERMAL MANAGEMENT** - Patented (No.'s: 7,810,960 & 8,360,614) HEAT FORWARD/LIGHT FORWARD proprietary technology.

**EXTRA LONG LIFE** – 100,000 operating hours (@ 10 hrs/day is > 27 years)

**WARRANTY** – 5 year limited warranty, both LED and driver. Full warranty details available at [www.silescent.com](http://www.silescent.com)

**MADE IN USA** – Both driver and fixture are designed, engineered and mfr'd by Silescent Lighting in Ft. Lauderdale FL (ARRA & NAFTA compliant).

### SPECIFICATIONS (FIXTURE)

**TRIM RING STYLE** – 8 inch, Round-Flat

**FINISH** – Standard Powder Coat White Finish.

**INPUT VOLTAGE** – 120/277VAC<sub>in</sub> (Silescent HN3 driver)

**LAMP TEMPERATURES (CCT)** – 4000 Kelvin (CRI>80)

**OPTIC** – Diffuser, Wide Area Distribution.

**WATTAGE** – 20 watts.

**FIXTURE WEIGHT** – 0.9 lbs

*Standard options available upon request (Finish & CCT). Pricing & lead-times may be affected. Contact Manufacturer.*



MADE IN USA

Silescent Lighting Corp. • 1417 S.W. 1<sup>st</sup> Ave. • Ft. Lauderdale, FL 33315 • P: 877.766.8448 • F: 954.206.0071 • [www.silescent.com](http://www.silescent.com) • [info@silescent.com](mailto:info@silescent.com)

May 17, 2016

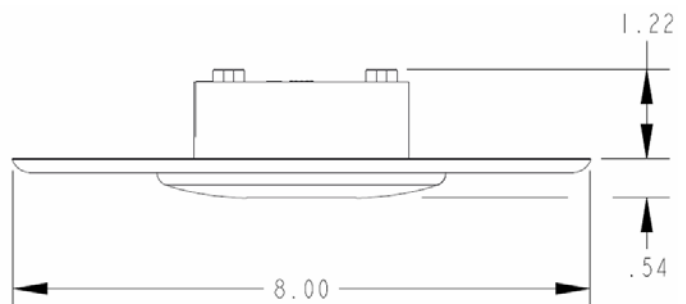


### ELECTRICAL DATA

- **Operating Temp:** -40°C to +40°C
- **Ambient Temp:** <35°C
- **Nominal Voltage:** 120/277 VAC
- **Operating Voltage:** 103 – 285VAC, 50 / 60 Hz

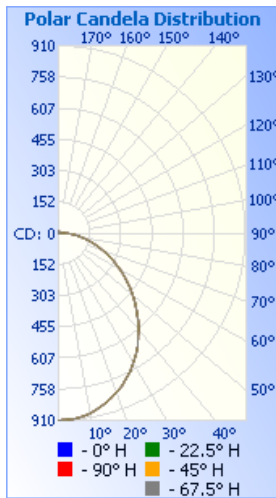
### PERFORMANCE SUMMARY

- **Lumens:** 2,380 lumens (*delivered*)
- **Wattage:** 20 watts
- **Efficacy:** 119 lumens/watt
- **CCT:** 4000 Kelvin (>80CRI)
- **IP Rating:** IP65 rated



K02-02

UPC: 692193788065: Diffuser, 120/277VACin, 4000k, 20.2 Watts, 2412.4 Delivered Lumens, 119.2 Lm/W (measured)  
 Mfr Item Code: K06084020w

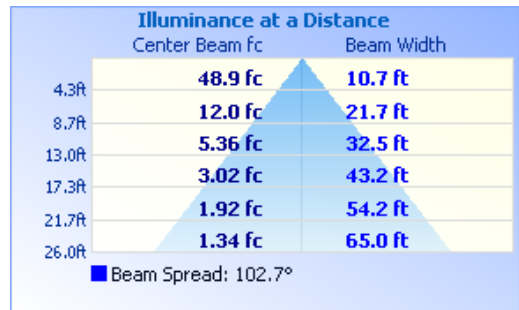


**Zonal Lumen Summary**

Zone	Lumens	% Luminaire
0-30	683.5	28.3%
0-40	1,099.5	45.6%
0-60	1,874.4	77.7%
60-90	527.5	21.9%
70-100	259.6	10.8%
90-120	7.1	0.3%
0-90	2,401.8	99.6%
90-180	10.6	0.4%
0-180	2,412.4	100%

**Lumens Per Zone**

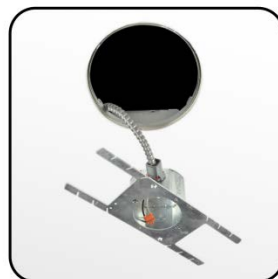
Zone	Lumens	% Total
0-10	85.4	3.5%
10-20	241.0	10.0%
20-30	357.1	14.8%
30-40	416.0	17.2%
40-50	413.8	17.2%
50-60	361.1	15.0%
60-70	273.7	11.3%
70-80	172.8	7.2%
80-90	80.9	3.4%



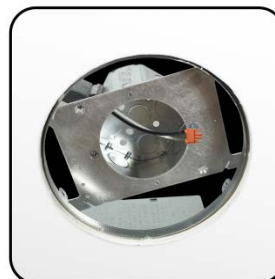
.ies files available upon request  
 (contact manufacturer)  
 File: S-HN340DM120w



**Step 1:** Remove old trim and can from ceiling to gain access behind ceiling.



**Step 2:** Attach flexible metal conduit from original fixture to the Silescent Can Light Conversion bracket using provided connector.



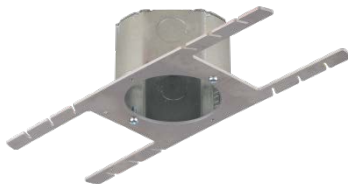
**Step 3:** Insert Can Light Conversion bracket into hole and align for easy LED fixture attachment.



**Step 4:** Secure LED fixture using provided fasteners then simply snap on cover to complete installation.

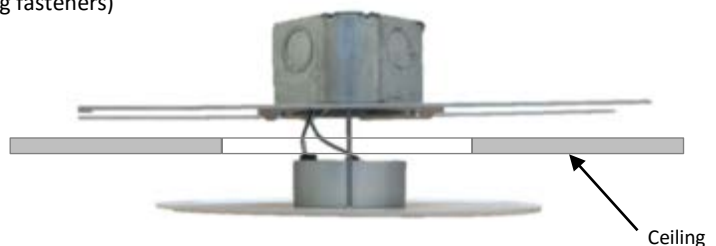
**Kit Includes:**

- 20w LED Fixture: 4000k, 2,400 delivered lumens
- 12in Conversion Bracket (IS01-3in, w/3in fixture mounting fasteners)



**Conversion Brackets:**

**IS01-3in Conversion Bracket** (holes ≤9in dia.) included in this kit  
 or  
**IS15-3in Conversion Bracket** (holes >9in dia.)



UPC:	692193788065	Type
Project:		
Comments:		Date
Prepared by:		